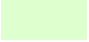






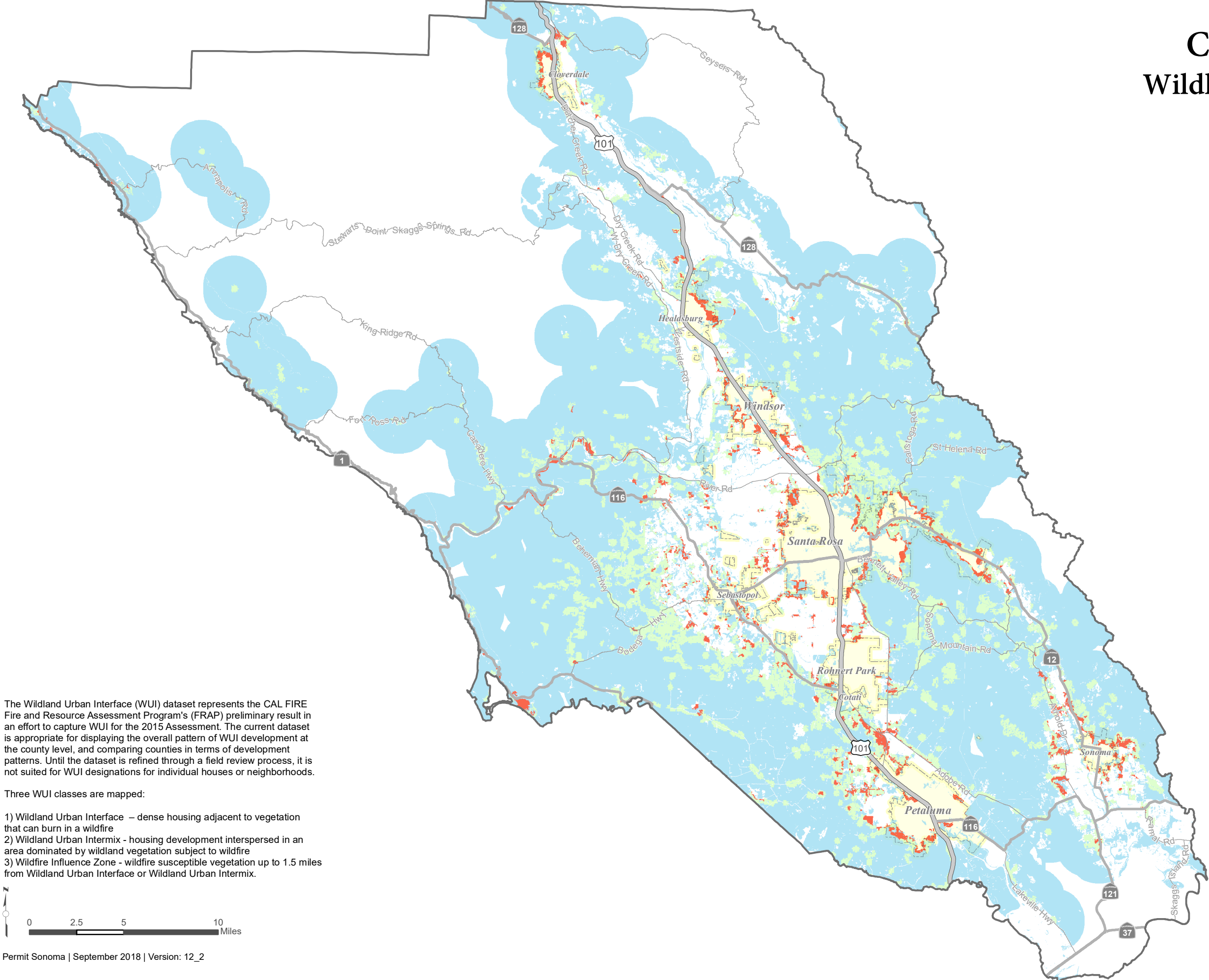


County of Sonoma

Wildland Urban Interface

FRAP Wildland Urban Interface 12_2

- Intermix 
- Interface 
- Influence Zone 
- City Limit 
- Federal Highway 
- State Highway 
- Road 



The Wildland Urban Interface (WUI) dataset represents the CAL FIRE Fire and Resource Assessment Program's (FRAP) preliminary result in an effort to capture WUI for the 2015 Assessment. The current dataset is appropriate for displaying the overall pattern of WUI development at the county level, and comparing counties in terms of development patterns. Until the dataset is refined through a field review process, it is not suited for WUI designations for individual houses or neighborhoods.

Three WUI classes are mapped:

- 1) Wildland Urban Interface – dense housing adjacent to vegetation that can burn in a wildfire
- 2) Wildland Urban Intermix - housing development interspersed in an area dominated by wildland vegetation subject to wildfire
- 3) Wildfire Influence Zone - wildfire susceptible vegetation up to 1.5 miles from Wildland Urban Interface or Wildland Urban Intermix.

